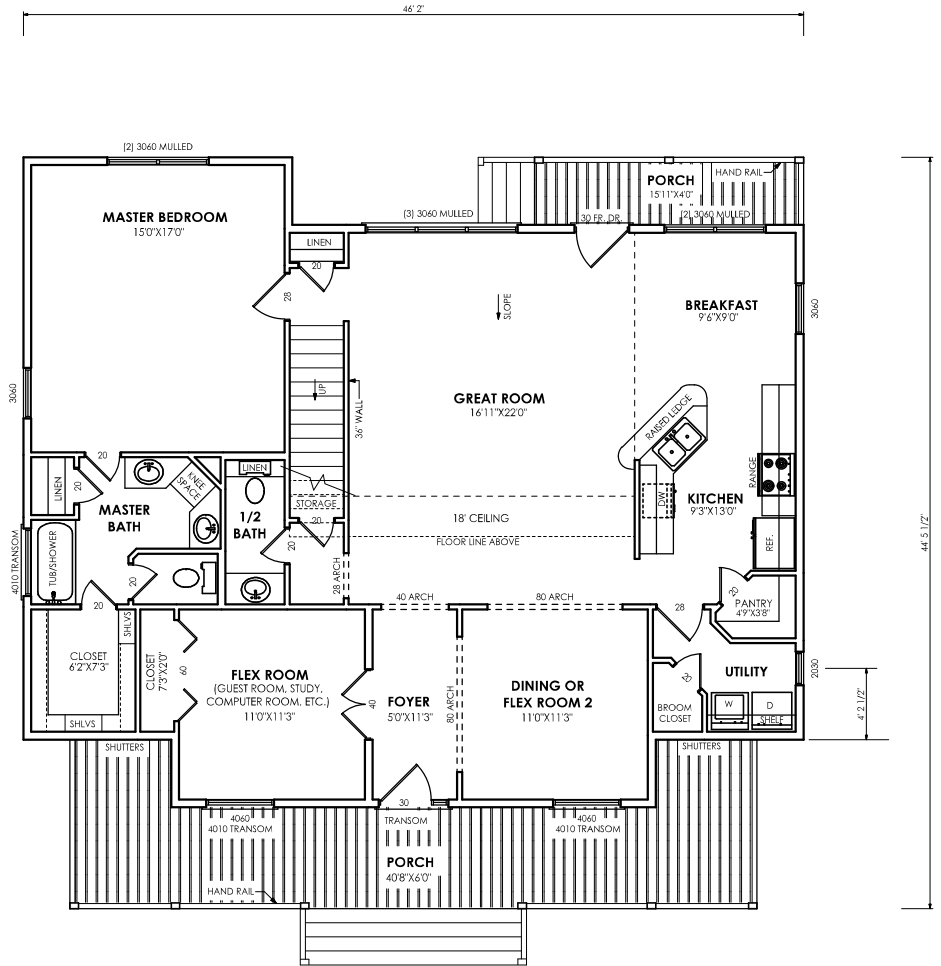


SECOND FLOOR PLAN



FIRST FLOOR PLAN


GENERAL NOTES

1. ALL CEILINGS ARE 9' HIGH 1ST FLOOR AND 8' HIGH 2ND FLOOR UNLESS NOTED OTHERWISE.
2. WINDOW AND DOOR OPENINGS ARE STATED IN FEET AND INCHES: IE. WINDOWS 3060 = 3'0" WIDE X 6'0" HIGH, DOORS 28 = 2'8" WIDE.

1ST FLOOR:	1585 SQ. FT.
2ND FLOOR:	455 SQ. FT.
TOTAL LIVING AREA:	2040 SQ. FT.
FRONT PORCH:	298 SQ. FT.
BACK PORCH:	63 SQ. FT.
BALCONY:	79 SQ. FT.
TOTAL UNDER ROOF:	2480 SQ. FT.

ALL "TONY HOUSEMAN HOMES" FLOOR PLANS AND ELEVATIONS ARE COPYRIGHTED. REDRAWING AND/OR CONSTRUCTING A HOME THAT UTILIZES DESIGN ELEMENTS, EITHER IN WHOLE OR PART, BASED ON A COPYRIGHTED "TONY HOUSEMAN HOMES" PLAN, CONSTITUTES INFRINGEMENT OF U.S. COPYRIGHT LAW.

"TONY HOUSEMAN HOMES" WILL ENFORCE COPYRIGHT LAWS TO THE FULLEST EXTENT.
© TONY HOUSEMAN HOMES 2005

 (409) 745-2121	
FLOOR PLAN COLORADO I	
D. GANDY HOME DESIGNS (409) 745-2665 www.dgandyhomedesigns.com	LIVING AREA = 2040 SQ. FT.
DATE: 12/30/04	SCALE: 1/8" = 10" SHT: 1 OF 3