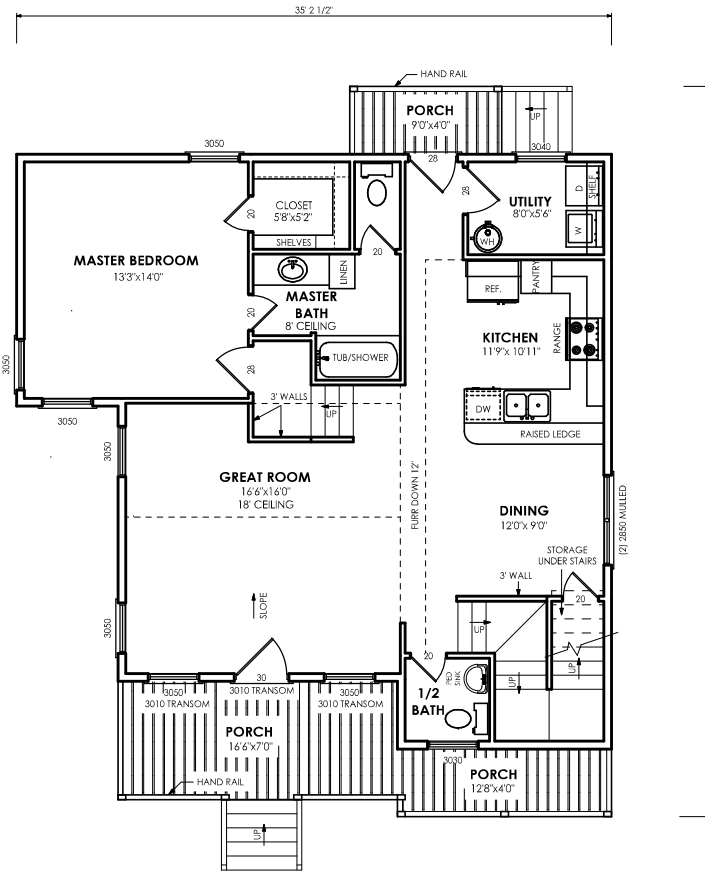


THIRD AND FOURTH FLOORS



FIRST AND SECOND FLOORS

GENERAL NOTES


1. ALL CEILINGS ARE 9' ON 1ST AND 2ND FLOOR AND 8' HIGH ON 3RD AND 4TH FLOOR UNLESS NOTED OTHERWISE.
2. WINDOW AND DOOR OPENINGS ARE STATED IN FEET AND INCHES:
IE. WINDOWS 3060 = 3'0" WIDE X 6'0" HIGH, DOORS 28 = 2'8" WIDE.

1ST AND 2ND FLOOR LIVING AREAS: 1051 SQ. FT.
 2ND AND 3RD FLOOR LIVING AREAS: 618 SQ. FT.
 TOTAL LIVING AREA: 1669 SQ. FT.
 FRONT PORCH: 171 SQ. FT.
 BACK PORCH: 36 SQ. FT.
 BALCONY: 51 SQ. FT.
 TOTAL UNDER ROOF: 1927 SQ. FT.

ALL "TONY HOUSEMAN HOMES" FLOOR PLANS AND ELEVATIONS ARE COPYRIGHTED. REPRODUCING AND/OR CONSTRUCTING A HOME THAT UTILIZES DESIGN ELEMENTS, EITHER IN WHOLE OR PART, BASED ON A COPYRIGHTED "TONY HOUSEMAN HOMES" PLAN, CONSTITUTES INFRINGEMENT OF U.S. COPYRIGHT LAW.

"TONY HOUSEMAN HOMES" WILL ENFORCE COPYRIGHT LAWS TO THE FULLEST EXTENT.

© TONY HOUSEMAN HOMES 2005

 (409) 745-2121	
FLOOR PLAN LOUISIANA I	
D. GANDY HOME DESIGNS (409) 883-2772 www.dgandyhomedesigns.com	LIVING AREA = 1669 SQ. FT.
DATE: 1/4/05	SCALE: 1/8" = 1'0" SHT: 1 OF 2